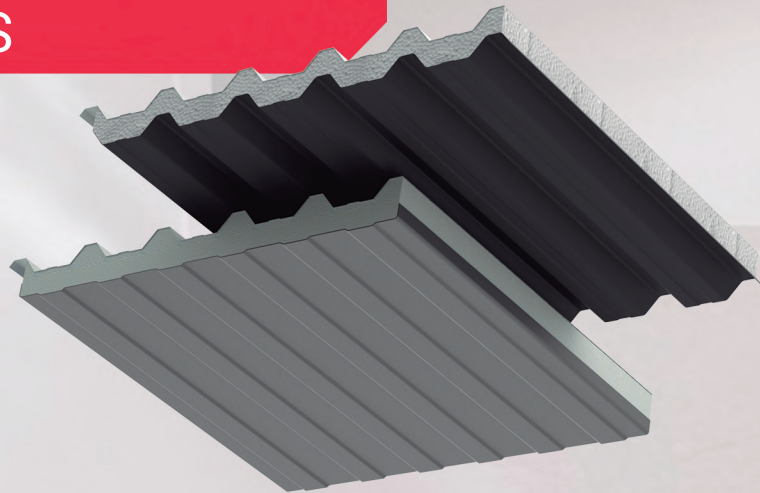
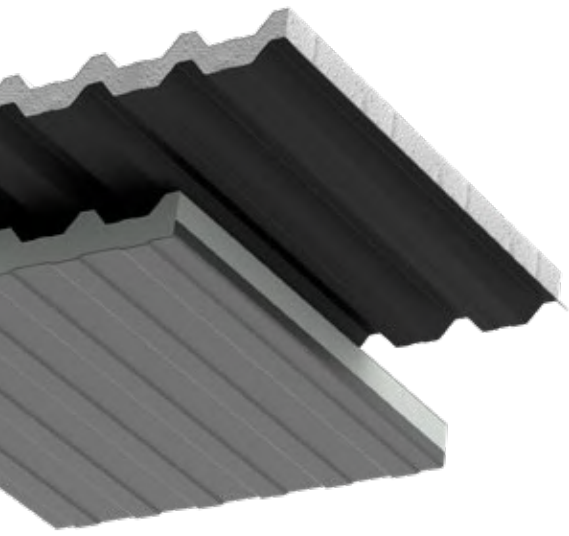


 **PLANEFIBRA®**

FRP PANEL/TRAY  
TO COMPOSE  
THERMOACOUSTIC  
PANELS





PLANEFIBRA  
**CORROSION  
RESISTANCE**

THE SOLUTION YOU WERE  
NOT EVEN LOOKING FOR.

If what you are looking for is a perfectly seamless and corrosion resistant finishing for your roof, in the right color for your project, look no further. **PlaneFibra panels are the right combination for the inferior panel or tray (ceiling) that you need.**

They can be used as rooftop in the **composition of thermoacoustic panels**, and applied to more aggressive environments and places with corrosive products, as well as air-conditioned environments, creating an excellent finishing. They are efficient, for example, for industrial areas, supermarkets, shopping malls, educational and recreational facilities, just to mention a few.

**BENEFITS OF PLANEFIBRA FRP PANELS**

- ✓ Excellent internal temperature control;
- ✓ Easy to clean;
- ✓ High chemical resistance;
- ✓ Made to order;
- ✓ Manufactured on the right color for your project, since pigmentation is done at the manufacturing process.

**COMPARATIVE TABLE**

	PRFV		GALVANIZED STEEL		
	0.80 mm	1.00 mm	0.43 mm	0.50 mm	0.65 mm
Thickness	0.80 mm	1.00 mm	0.43 mm	0.50 mm	0.65 mm
Weight kg/m <sup>2</sup>	1.38	1.725	3.90	4.50	5.90
Chemical resistance	Resistant to neutral and alkaline chemical agents			X	
Corrosion resistance	Immune to corrosion and oxidation			X	

Weight: for FRP and galvanized steel, the 40/980 trapezoid panel was used.



PlaneFibra also offers safe and **efficient solutions with high resistance to the spreading of flames**, according to IT 10 (CLASS II-A) or in accordance with UL 94 | "Tests for Flammability of Plastic Materials for Parts in Devices and Applications". V-0 rating.



## FRP PRODUCTS EVOLUTION

Planefibra is always on top of the **market needs and demands**.  
That's how we became a reference when it comes to **FRP (Fiberglass-reinforced polyester)**.  
We guarantee the **durability and quality** of the products developed with this material.



## ONE PRODUCT, MULTIPLE ADVANTAGES:

### LOWER PANEL | TRAY

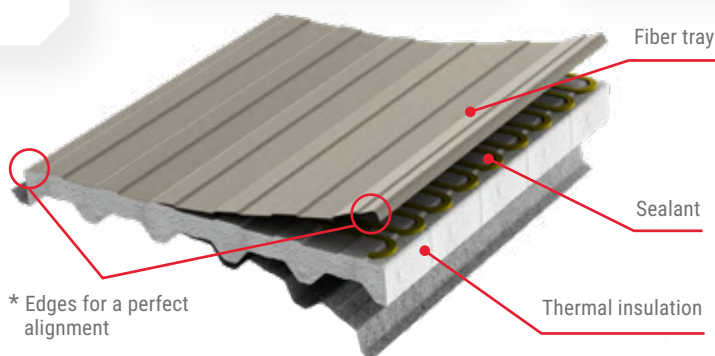
- ✓ Competitive price
- ✓ Corrosion resistant
- ✓ Reduced assembling time
- ✓ Less weight
- ✓ Less maintenance
- ✓ Flame resistant
- ✓ Noise reduction (EPS)

### ADVANTAGES FOR THE ROOF SEALING WORKER

- ✓ Easy to seal
- ✓ It does not dent/deform
- ✓ More productivity
- ✓ Transport
- ✓ Squaring/alignment\*

### ADVANTAGES FOR THE ROOF ASSEMBLING WORKER

- ✓ It does not dent during the assembling process
- ✓ Greater watertightness
- ✓ Less weight
- ✓ Easy to transport/handle



## PHYSICAL/MECHANICAL PROPERTIES

PROPERTIES	TESTING METHOD	MEASUREMENT UNIT	SPECIFICATION
Fiberglass content	NBR 13.275	% of mass	24 % (minimum)
Stretch	ASTM D 638	%	1 to 2
Tension resistance	ASTM D 638	Mpa	100 to 120
Tensile elastic modulus	ASTM D 638	Mpa	5,500 (minimum)
Bending resistance	ASTM D 790	Mpa	130 (minimum)
Bending elastic modulus	ASTM D 790	Mpa	5,000 (minimum)
Water absorption	ASTM D 570	% of mass	1 (maximum)
Barcol hardness	ASTM D 2583	0 to 100	40 to 50

# PERSONALIZED SERVICE

## **Above all, we are experts in this business.**

After all, it is your project's roof that we are talking about.

Focused on the construction and industry sectors, through the vast experience acquired over the years and a team of specialized professionals, Planefibra always **develops its products to meet a demanding market in the roofing segment.**

**We specialize in roofing products made of fiberglass-reinforced polyester, FRP**, and it is our commitment to excel in panel manufacturing and in all the services we offer.

**Our engineering and project departments offer technical support to our clients, so they could choose the best roofing or ventilation system alternatives for their projects.**

## **OUR WORK METHOD**

- ✓ Engineering department assistance as needed.
- ✓ After the digital projects are available, analyze them to determine the needs and application of products.
- ✓ Calculate the total cost of Planefibra products that will be used in the project.
- ✓ Prepare a lighting design and its consequent versatility (investment return, suitable products, exclusive solutions).
- ✓ Identify the right product for the roofing or ventilation system.
- ✓ Provide technical information on storage and material handling.
- ✓ Product certification and/or compliance with the applicable codes.
- ✓ Specified product assembling project in exclusive projects.



## PLANEFIBRA, YOU CAN COUNT ON US!

- ✓ Production line with efficient methods and trained and experienced professionals.
- ✓ Special service and guaranteed scheduled delivery.
- ✓ High-quality material, focusing on more resistant and long-lasting products.
- ✓ Full compliance with the NBR 16753 code.  
Our panels are the only ones on the market that have a polyester film with UV protection on both sides as a standard finish.
- ✓ Projects that seek a short-term return on your investment – Termoplan® Continuous Vaults.
- ✓ Natural lighting solutions for zipped metal roofs.
- ✓ Roofs designed for aggressive environments or places with corrosive products.
- ✓ Flame resistant products, tested in accordance with NBR 9442, ASTM E662 and IT 10/2011 - Class II-A | UL 94/97
- ✓ Ventilation systems / Industrial shutters.
- ✓ Your best option for road sign making, meeting the NBR 13.275:2013 code.
- ✓ Products offered in traditional colors, natural transparent and opaque white, as well as color pigmentation options, with the possibility of creating different shades to suit specific projects.
- ✓ We manufacture practically all models of panels in the market, whether you are replacing old roofs or making new building projects.

 **PLANEFIBRA®**



# #PLANEFIBRA®

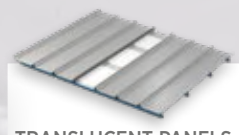
## OUR PRODUCTS



TRANSLUCENT ROOFING PANELS



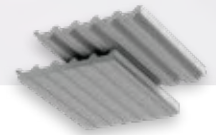
TERMOPLAN® CONTINUOUS VAULT



TRANSLUCENT PANELS FOR ZIPPED METAL ROOFING



CORROSION RESISTANT ROOFING PANELS



FRP PANEL/TRAY TO COMPOSE THERMOACOUSTIC PANELS



#RC FIRE RESISTANT



PANELS FOR PERGOLAS



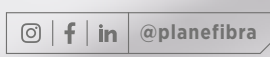
VENTILATION SYSTEM /INDUSTRIAL SHUTTERS



VERTICAL ROAD SIGNS



[planefibra.com.br](http://planefibra.com.br)



[@planefibra](https://www.instagram.com/planefibra)

+55 (47) 3203-4700 . [comercial@planefibra.com.br](mailto:comercial@planefibra.com.br)  
Av. dos Imigrantes, 1770 . Bairro Brasília . CEP 89282-685  
São Bento do Sul . SC